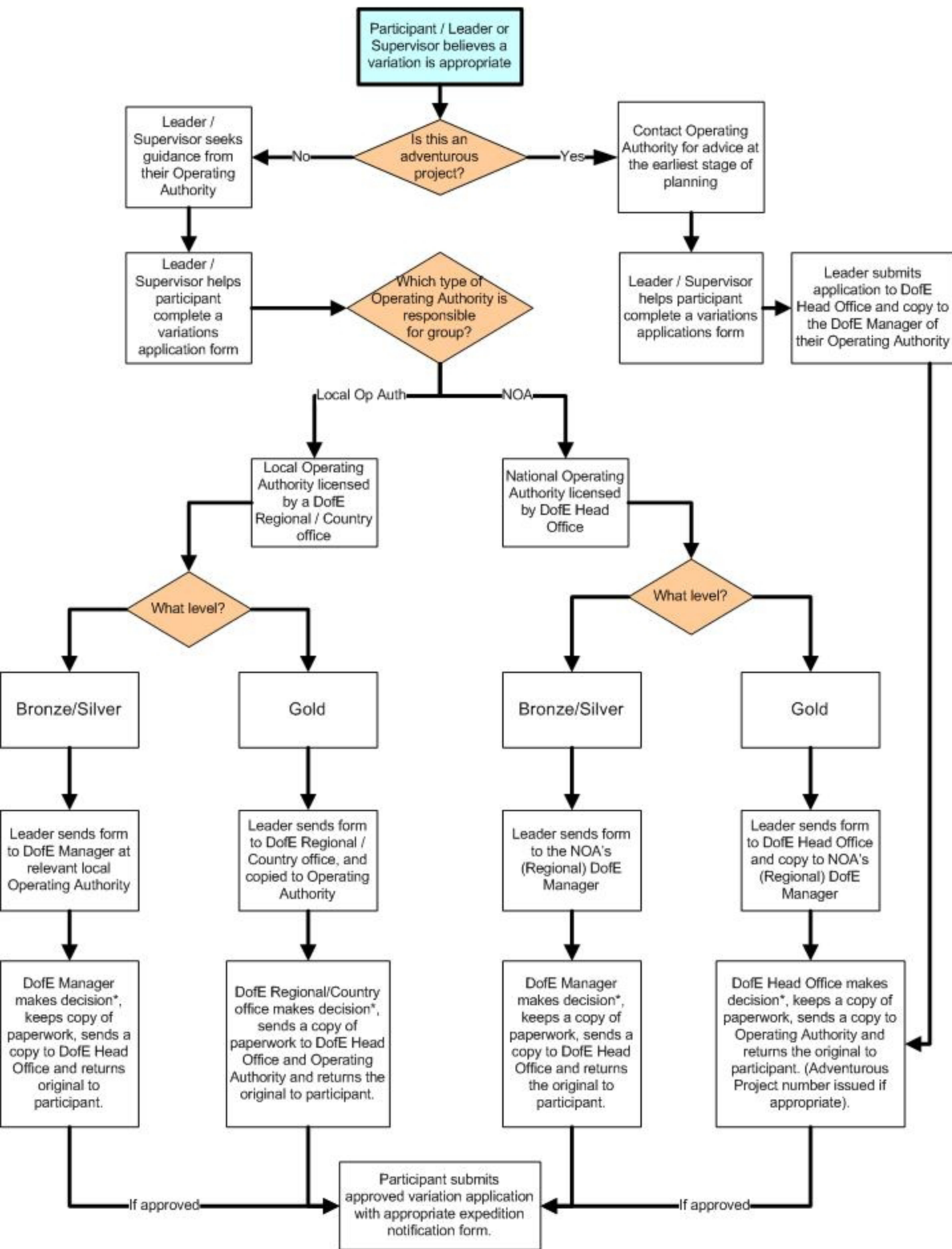


# Expedition Variations Guidance

Version Date  
11 Sept 2008

Variation application forms must be submitted at least 12 weeks prior to the expedition and after advice has been sought from their Operating Authority



\* Decisions are based on the conditions of the Expedition section and the individual needs of the participant or expedition team.  
DoFE offices are always happy to provide advice to Operating Authority